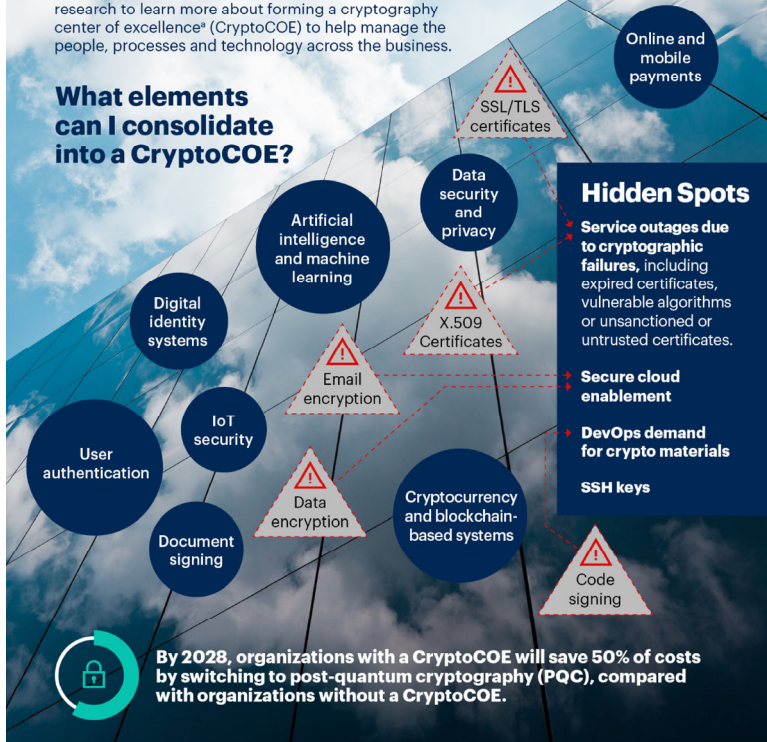


Why You Need a Crypto Center of Excellence Now

Although cryptography is critical infrastructure for digital business and trust, security and risk management leaders struggle to manage systems that rely on it. Use this research to learn more about forming a cryptography center of excellence* (CryptoCOE) to help manage the people, processes and technology across the business.

What elements can I consolidate into a CryptoCOE?

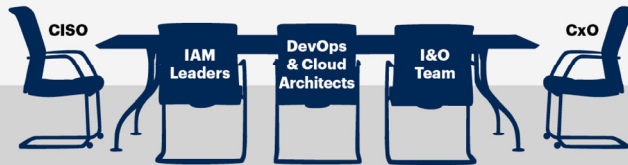


By 2028, organizations with a CryptoCOE will save 50% of costs by switching to post-quantum cryptography (PQC), compared with organizations without a CryptoCOE.

Organizations must prepare by building a CryptoCOE that helps manage the people, process and technology across the business.

CryptoCOE Functions

- Provide guidelines for PQC enablement
- Provide cryptography technical specifics/requirements
- Enable cryptography as a service



Recommendations

- Form a CryptoCOE that's optimized for your specific organization.
- Establish ownership of tools and keys to cover all your hybrid and multicloud environment.
- Provide tailored guidance to DevOps and security teams.

Source: Gartner
 Note: BU = business unit; CISO = chief information security officer; IAM = identity access management; IoT = Internet of Things; I&O = infrastructure and operations; SSH = Secure Shell; SME = subject matter expert; SSL = Secure Sockets Layer; TLS = Transport Layer Security
 * Gartner defines a center of excellence as a physical or virtual center of knowledge that concentrates expertise and resources in a discipline or capability in order to attain and sustain performance and value.
 © 2024 Gartner, Inc. and/or its affiliates. All rights reserved. 789349_C