

ECS Public Trust End of Life: Seamless migration to Sectigo Certificate Manager (SCM)

Ensure continuity

In January 2025, Sectigo acquired Entrust’s public certificate business. Since then, we’ve worked closely with Entrust to support customers through this transition. Now, we are entering the next phase.

Entrust Certificate Services (ECS) Public Trust will reach End-of-Life (EOL) on September 8th, 2025. On that date, ECS will no longer issue or manage public certificates.

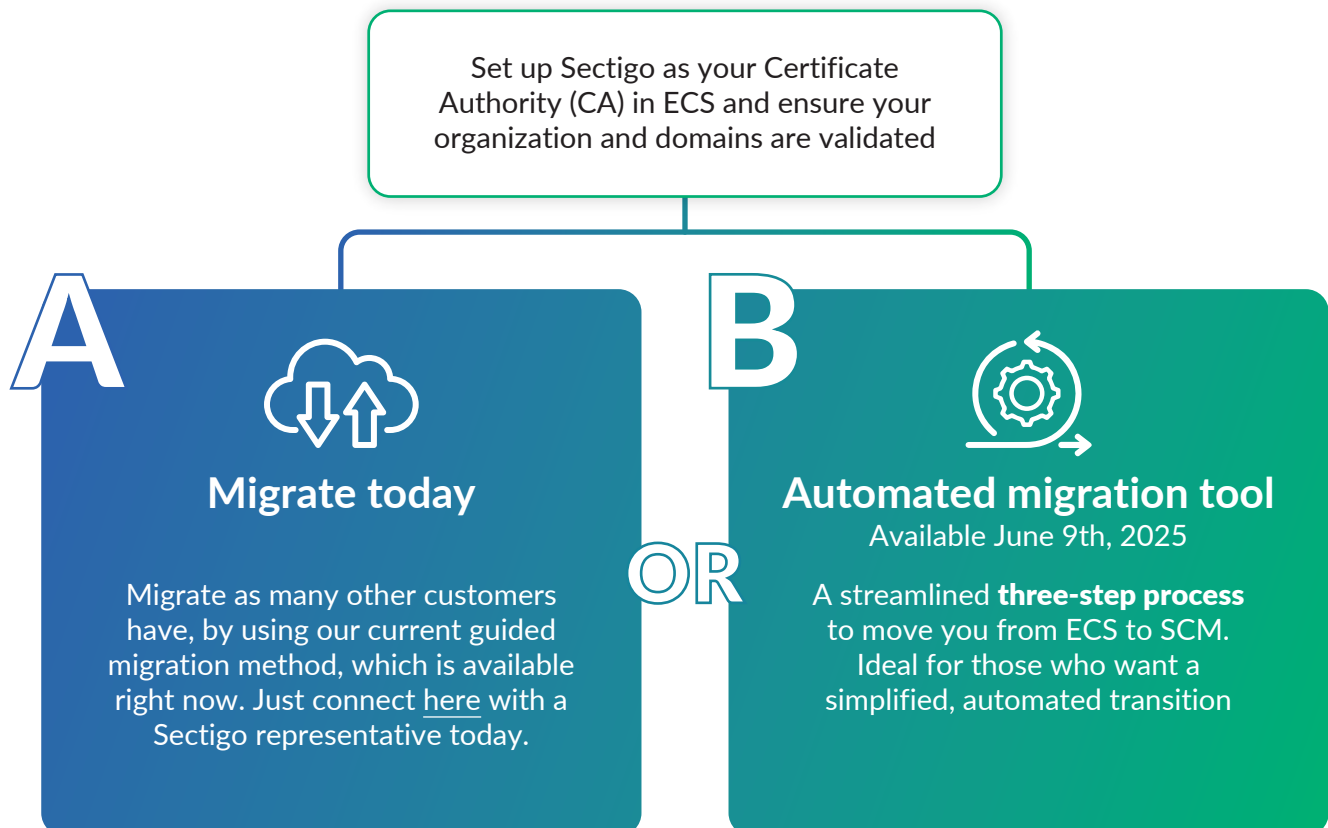
To ensure business continuity, you’ll need to transition to a new certificate management solution. Sectigo is here to support you every step of the way with flexible migration options—including a new Automated Migration Tool available June 9th, 2025.

You can start migrating today through our guided process or use the new tool starting June 9th, 2025.

A clear path

Simple, actionable migrations options

Sectigo makes it easy to migrate on your terms. Here’s how:



Already ready? Migrate today!

Don't wait until June 2025. Get started today using our guided migration process. Many customers have already completed their transition to Sectigo CA and SCM with the help of our onboarding team.

- Simply select Sectigo as your CA of choice in ECS
- Validate your organization(s) and domain(s)
- [Connect here to schedule time](#) with a Sectigo representative today

Use the automated migration tool

Your easy, 3-step migration path available June 9th, 2025

We've created a simple, phased approach to make your migration as smooth as possible

1 Set up Sectigo CA and validate organizations and domains

- Select Sectigo as your Certificate Authority (CA) in ECS
- With Sectigo as your new CA, validate your organization(s) and domain(s)
- At least one organization and one domain must be validated to proceed to step 2

2 Set up and test

- In ECS select the option to test SCM to trigger the testing phase
- All ECS admins are copied over. Super Admins will receive login credentials and can manage who else has access during testing
- Log into SCM
- Run certificate discovery
- Issue certificates
- Create notification workflows
- Familiarize yourself with the available SCM key capabilities
- You must begin the SCM testing phase by August 8th, 2025 in ECS

3 Full migration

- In ECS select the option to fully migrate to SCM. The full migration must be completed by September 8th, 2025.
- Certificate metadata, S/MIME keys, and licensing data are then automatically moved from ECS to SCM
- ECS becomes read-only once this step (#3) is completed
- From this point forward, all management occurs in SCM

Migration timeline and milestones

Date	Milestone
April - May 2025	Start your migration process by selecting Sectigo as your CA in ECS
May 12th, 2025	Entrust end-of-issuance for S/MIME and VMC certificates
June 9th, 2025	Automated migration tool becomes available
August 8th, 2025	Deadline to initiate and test the migration process
September 8th, 2025	ECS enters read-only mode; Sectigo will commence automatic migration for remaining accounts
September 17th, 2025	Read-only access in ECS will end

Key notes

Entrust will be stopping issuance of S/MIME and VMC certificates on May 12th, 2025. To address any migration concerns regarding these certificates please [contact Sectigo](#) and we will help you determine next steps.

What's not migrated?

The following items will not be included in the automated migration:



eIDAS (Qualified Certificates), VMC, Document Signing certificates and Signing services



Existing ACME Keys and /or Entrust Turbo



API integrations will require reconfigurations

How we help

Some items will not automatically migrate, here are your options:

Contact entrust-customers@sectigo.com to coordinate replacement services.

Sectigo SCM will generate new keys.

Entrust Turbo customers can take advantage of Sectigo's network agent.

Generate new API keys to connect to Sectigo's API's.

Need more help?

Our support doesn't stop once you migrate. Sectigo offers in-platform onboarding tools (checklists, walkthroughs) and personalized guidance every step of the way.

Contact your Sectigo representative at entrust-customers@sectigo.com

For more answers, check out our [FAQ article](#)

Join a AMA session (Ask Me Anything)
[April 30th, 2025](#) | [May 1st, 2025](#)